



Maxspect Commercial LED Floodlights User Manual v1.1

Dear Customer,

Thank you for purchasing this product.

For optimum performance and safety, please read these instructions carefully.

User Memo:

Date of purchase:	_____
Dealer name:	_____
Dealer address:	_____
Dealer website:	_____
Dealer email:	_____
Dealer phone no.:	_____

Before using the Maxspect™ Commercial LED Floodlight Lighting System

1. Remove any plastic bags and packaging material protecting the fixture.
2. Never look directly at the LED bulbs when you switch on the system. Incorrect use of this apparatus will increase eye hazard.

On Safety

1. **Power Source** – Do not defeat the safety purpose of the polarized or grounding-type plug. A polarized plug has two blades with one wider than the other. A grounding-type plug has two blades and a third grounding prong. The wide blade or the third prong are provided for your safety. If the plug does not fit into your outlet, consult an electrician for replacement of the obsolete outlet.
2. **Power Cord Protection** – The power supply cords should be routed so that they are not likely to be walked on or pinched by items placed upon or against them. Never take hold of the plug or cord if your hand is wet, and always grasp the plug body when connecting or disconnecting it.
3. **Installation** – Install indoor only, and use the attachments, mounting frames, hanging kit and accessories provided and specified by the manufacturer.

On Operation

1. **Operation** – Always follow the operation instructions set forth in this manual when using this Maxspect™ Commercial LED Floodlight Lighting System.
2. **Heat** – The apparatus should be situated away from heat sources such as radiators, and do not expose to excessive heat such as sunshine, fire or the like.

3. **Moisture** – To reduce the risk of fire or electric shock, do not expose this apparatus to rain, moisture, dripping or splashing.
4. **Ventilation** – The apparatus should be situated so that its location or position does not interfere with its proper ventilation.
5. **Magnetism** – The apparatus should be situated away from equipment or devices that generate strong magnetism.
6. **Cleaning** – Clean only with dry cloth.

7. **FCC Statement** – This equipment has been tested and found to comply with the limits for a Class B digital device, pursuant to part 15 of the FCC Rules. These limits are designed to provide reasonable protection against harmful interference in a residential installation. This equipment generates, uses and can radiate radio frequency energy and, if not installed and used in accordance with the instructions, may cause harmful interference to radio communications. However, there is no guarantee that interference will not occur in a particular installation. If this equipment does cause harmful interference to radio or television reception, which can be determined by turning the equipment off and on, the user is encouraged to try to correct the interference by one or more of the following measures:

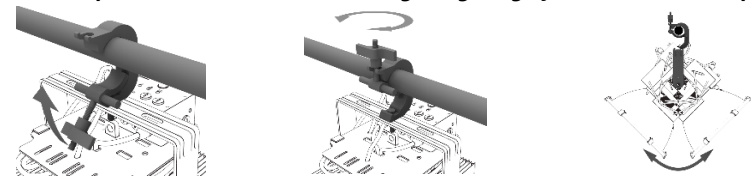
- Reorient or relocate the receiving antenna.
- Increase the separation between the equipment and receiver.
- Connect the equipment into an outlet on a circuit different from that to which the receiver is connected.
- Consult the dealer or an experienced radio/TV technician for help.

Caution: Any changes or modifications to this device not explicitly approved by manufacturer could void your authority to operate this equipment.

This device complies with part 15 of the FCC Rules. Operation is subject to the following two conditions: (1) This device may not cause harmful interference, and (2) this device must accept any interference received, including interference that may cause undesired operation.

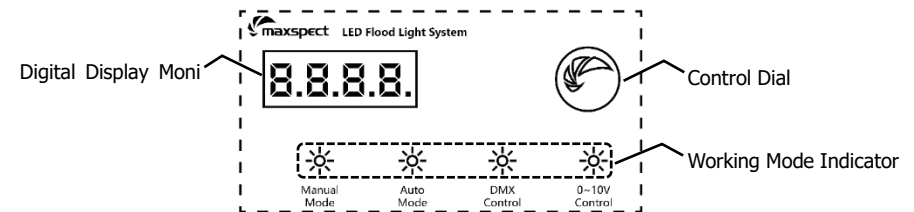
This equipment complies with FCC radiation exposure limits set forth for an uncontrolled environment. This equipment should be installed and operated with minimum distance 20cm between the radiator & your body.

Mounting the Maxspect™ Commercial LED Floodlight Lighting System(Hook sold separately)

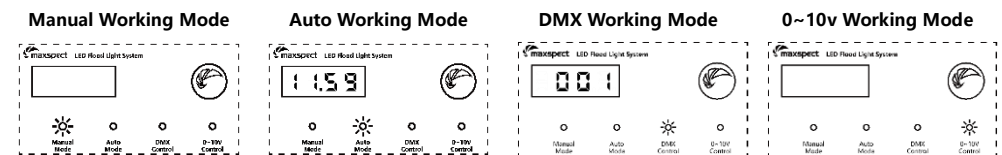


Tips: Customer should assemble the WiFi Antenna by themselves.

Onboard Controller Operation







Maxspect™ commercial LED floodlight features four working modes: Manual Working Mode, Automatic Working Mode, DMX Working Mode and 0~10v Working Mode.

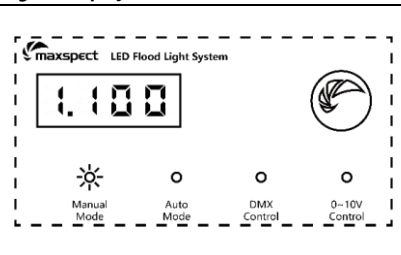


Press and hold the control dial for about 2s, release it when one of the indicator is flashing. Repeat this procedure can switch among the working modes.

Manual Working Mode: User can set the brightness by the onboard controller or by SYNA-G APP when the fixture is connected to ICV6(sold separately).

Initial Working Status **Indicator: ON** **LED Channel(s): 100%** **Digital Display: OFF**

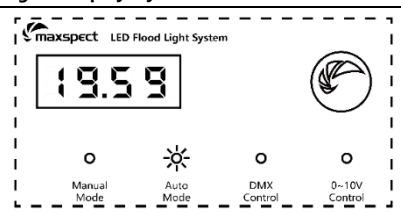
1. While in manual working mode, press  to activate the digital display and enter setup page
2. Press  again to switch between the LED channels.
3. Rotate  to adjust the brightness.
4. Press  for 2s or leave without operation for 30s to save the setting.



Automatic Working Mode: User can activate this function by the onboard controller. However it is necessary to wirelessly connect the fixture to ICV6(sold separately) to get full access to the function. Once it is connected, user can set the working time and brightness through SYNA-G APP.

Initial Working Status **Indicator: ON** **LED Channel(s): 100%** **Digital Display: System Time**

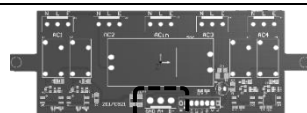
While in Automatic Working Mode, current time will be shown on the digital display monitor. However user can only get full access to the functions by connecting it to ICV6.






DMX Working Mode: It is prepared for the user who wants to control the fixture by third party controller which supports DMX control. User can activate this mode by the onboard controller or by SYNA-G APP when the fixture is connected to ICV6(sold separately). DMX working mode offers a set of recognition code(001~512) for user. When there are multiple fixtures connected to a DMX control equipment, user can set them in multiple groups by giving them different recognition code.

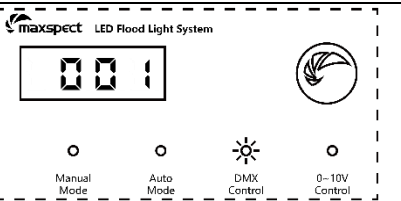
Initial Working Status **Indicator: ON** **LED Channel(s): 0%** **Digital Display: ON** **Recognition Code: 001**

For the user who wants to control the fixture by DMX control equipment, disassemble the control box by unfastening the screws on the four sides of the box, find the connections shown on the right then connect the cables accordingly.



GND: Ground connection
A+: Positive connection
B-: Negative connection

1. While in DMX Working Mode, press  to enter the setup page.
2. Rotate  to set a code.
3. Press  for 2s or leave without operation for 30s to save the setting.

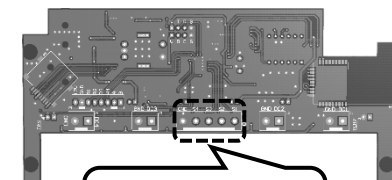


0~10v Working Mode: It is prepared for the user who wants to control the fixture by third party controller which supports this function. User can activate this function by the onboard controller or by SYNA-G APP when the fixture is connected to ICV6(sold separately).

Initial Working Status **Indicator: ON** **LED Channel(s):0%** **Digital Display: OFF**

For the user who wants to control the fixture by voltage control equipment, disassemble the control box by unfastening the screws on the four sides of the box, find the connections shown on the right then connect the cables accordingly.

Tips: Not every channel needs to be connected if the fixture only has 2 channels, in this case user just needs to connect S1 and S2 to control the fixture.



GND: Ground connection
S1: Channel 1st S2: Channel 2nd
S3: Channel 3rd S4: Channel 4th

Limited Warranty

Maxspect (HongKong) Limited warrants all Maxspect™ Commercial LED Floodlight Lighting products against defects in workmanship for a period of 12-months from the date of purchase. If a defect exists during the warranty period, Maxspect (HongKong) Limited at its option will either repair (using new or remanufactured parts) or replace (with a new or remanufactured unit) the product at no charge.

THE WARRANTY WILL NOT APPLY TO THE PRODUCT IF IT HAS BEEN DAMAGED BY MISUSE, ALTERATION, ACCIDENT, IMPROPER HANDLING OR OPERATION, OR IF UNAUTHORIZED REPAIRS ARE ATTEMPTED OR MADE. SOME EXAMPLES OF DAMAGES NOT COVERED BY WARRANTY INCLUDE, BUT ARE NOT LIMITED TO, USING AFTER-MARKET LED BULBS AND MODIFICATION OF THE CIRCUITRY, WHICH ARE PRESUMED TO BE DAMAGES RESULTING FROM MISUSE OR ABUSE.

DISCLAIMER OF CONSEQUENTIAL AND INCIDENTAL DAMAGES:

You and any other user of Maxspect (HongKong) Limited products shall not be entitled to any consequential or incidental damages, including without limitation, loss of use of the unit, inconvenience, damage to personal property, phone calls, lost income or earnings. This warranty gives you specific legal rights and you may also have other rights, which vary from state to state.

MAXSPECT LTD. MAKES NO WARRANTY OR REPRESENTATION, EITHER EXPRESS OR IMPLIED, WITH RESPECT TO THE PRODUCT'S QUALITY, PERFORMANCE, MERCHANTABILITY, OR FITNESS FOR A PARTICULAR PURPOSE. AS A RESULT, THIS PRODUCT, IS SOLD "AS IS," AND YOU THE PURCHASER ASSUME THE ENTIRE RISK AS TO ITS QUALITY AND PERFORMANCE.

IN NO EVENT WILL MAXSPECT LTD BE LIABLE FOR DIRECT, INDIRECT, SPECIAL, INCIDENTAL, OR CONSEQUENTIAL DAMAGES RESULTING FROM ANY DEFECT IN THE PRODUCT OR ITS DOCUMENTATION.

The warranty, disclaimer, and remedies set forth above are exclusive and replace all others, oral or written, expressed or implied. At no time will any Maxspect (HongKong) Limited dealers, agents, or employees be authorized to make any modifications, extension, or addition to this warranty.

Some states do not allow the exclusion or limitation of implied warranties or liability for incidental or consequential damages, so the above limitation or exclusion may not apply to you